



CoachCam



VIRGIN 4:21 PM 22%

Statistics

Week Month Year Career

< JANUARY 4 - 10, 2016 >


FG% ▾

| | |
|-----------------|-----|
| Shots Made | 75 |
| Shots Attempted | 150 |
| FG% | 50% |
| Highest FG% | 38% |
| 1/08/16 | |

GRAPH HEAT MAP

FREQUENCY EFFICIENCY

BELOW AVERAGE ABOVE AVERAGE

A dynamic photograph of two basketball players in action on a court. The player on the left is wearing a red jersey and shorts, dribbling a basketball. The player on the right is wearing a white jersey and shorts, in a defensive stance. The background is dark, with a basketball hoop visible. The floor is green with yellow lines.

Basketball
is a complex sport
to track.

PROBLEMS



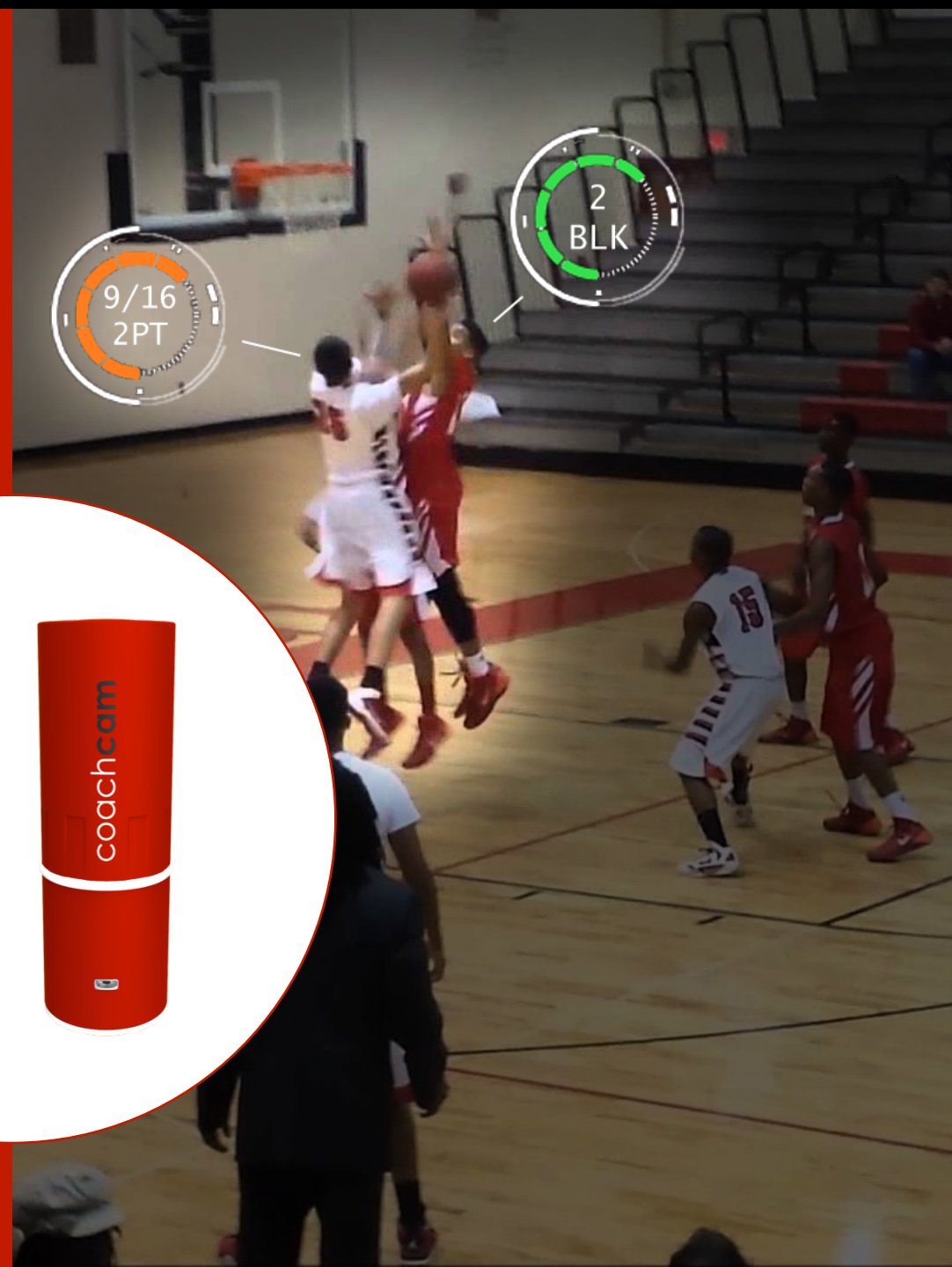
NBA-like multiplayer data is not available for the mass market.

High cost and long turnaround time to manually annotate data and get statistics.

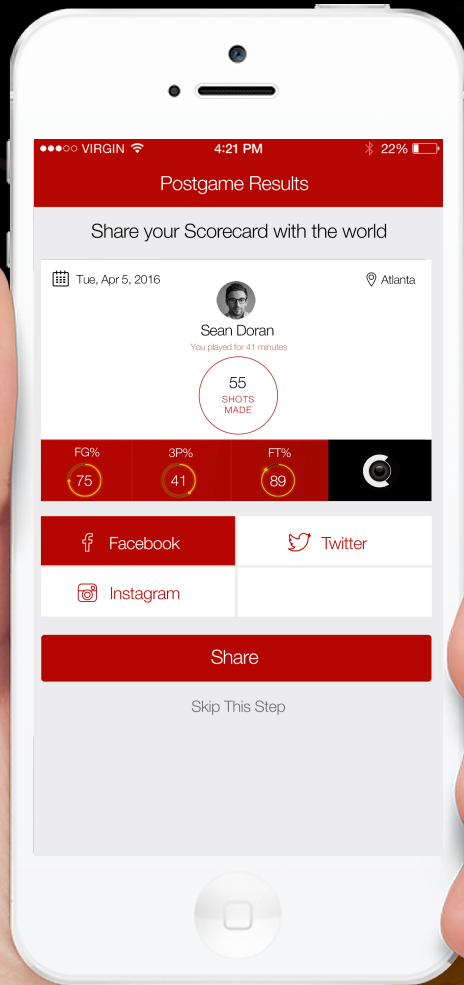
Current solutions are limited & expensive - **\$200 Smart Basketball!**

INTRODUCING COACHCAM

A smart camera that tracks **multiplayer** basketball statistics through **computer vision**.



HOW IT WORKS



Connect

Connect your phone to the pre-installed CoachCam via WiFi.



Calibrate

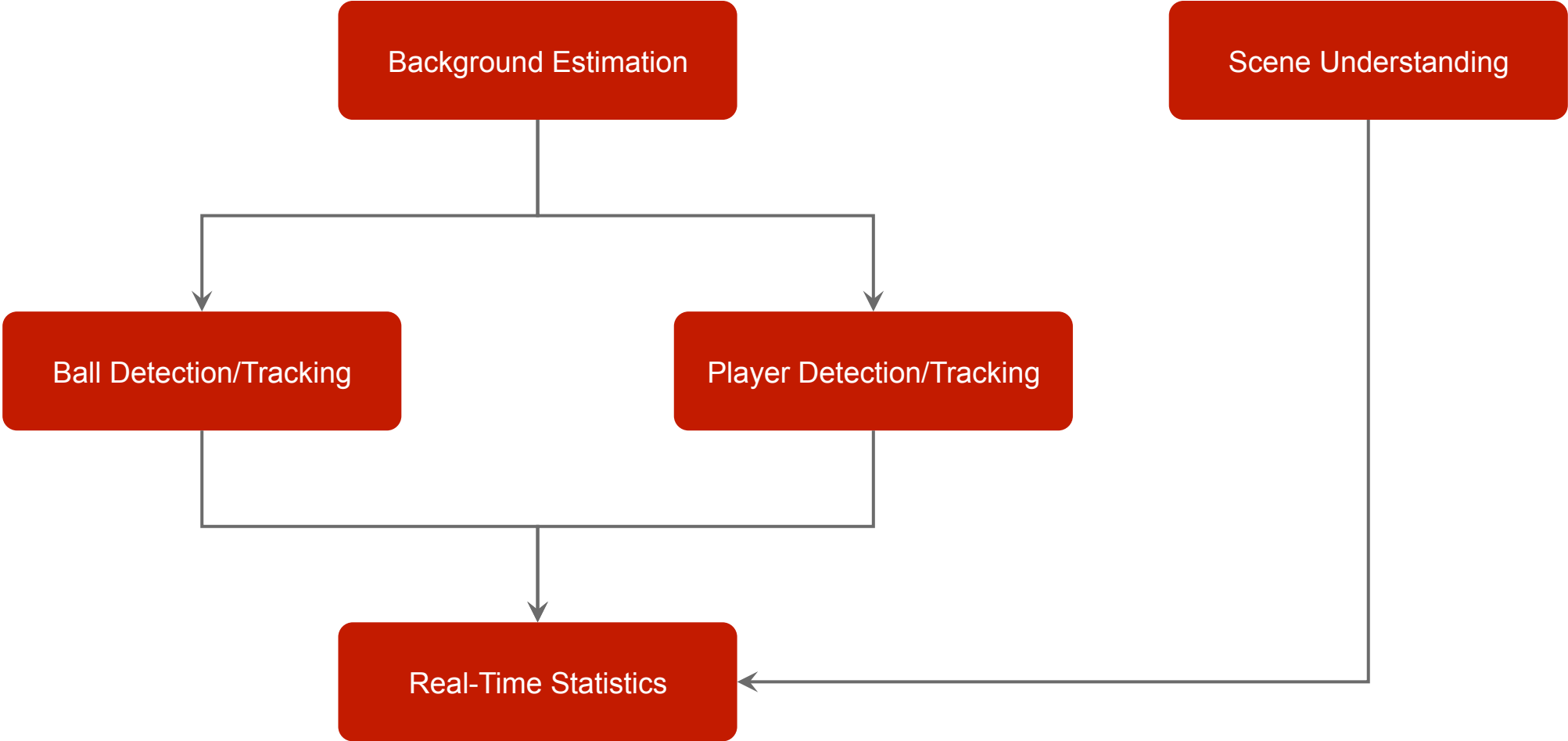
Calibrate yourself by doing a 360° turn in the dedicated calibration zone to initiate the CoachCam player tracker.



Ball

Play ball and let CoachCam handle the rest. View your scorecard and heat map when you are done playing.

TECHNOLOGY



MARKET

450M Basketball players worldwide!



\$1B+
USA Opportunity
(TAM)



MARKET



Target Market

B2B

Schools & Gyms

B2C

Amateur, Semi-Pro,
Pro, Coaches,
Trainers

Customer Acquisition Channels

Strategic
Partnerships

Direct
Website

Social Media/
Content
Marketing

Online
Partnerships

Endorsements

Trade
Shows

Tournaments
*anything max
exposure/min
cost

BUSINESS MODEL



Hardware
(initial direct sale)



Software
(recurring revenue)

TODAY'S SOLUTION



W



COMPETITIVE LANDSCAPE



Single Player



Multiplayer



Easy To Use



>95% Accuracy



No User Hardware



Long Lasting



Video Playback/
Analysis



PRODUCT ROADMAP



2017

Product 1

Single Player
Mobile App (SPM
B2C)

Product 2

CoachCam
Enabled Facilities
(B2B)

2016

Target Acquisition/Partners

- Sporting Good/Fitness companies
- Camera/Drone companies
- Video Analysis companies



Statistic Tracking Capability

Now: Basketball
Future: Soccer & Tennis



FUNDING REQUEST



Product
Launch

Advanced
Scenario
Testing

\$2.3M
Seed Round
18 Months
Runway

Initial
Inventory Run

Hire Early
Employees

FINANCIAL PROJECTIONS

| | Year 1 | Year 2 | Year 3 |
|---------------------|---------------------|--------------------|---------------------|
| Smart Courts | 10 | 600 | 2400 |
| Sales | \$77,226 | \$4,969,426 | \$22,969,119 |
| Transaction Fees | \$7,688 | \$200,435 | \$926,744 |
| COGS | \$11,620 | \$636,580 | \$3,358,830 |
| Operating Expenses | \$1,434,825 | \$2,362,075 | \$2,946,950 |
| Additional Expenses | \$22,000 | \$642,716 | \$5,520,308 |
| Net Profit | -\$1,398,907 | \$1,127,620 | \$10,216,287 |
| Profit Margin (%) | -1811.4% | 22.7% | 44.5% |

TEAM



Tobin Thomas
Co-Founder & CEO

Business/Finance
2013



Co-Founder



Consultant



Business Analyst



Rahul Sheth
Co-Founder & CTO

Business/Computer
Science 2015



Co-Founder



Technical
Consultant



IT Analyst



QiFeng Gan
Co-Founder & Advisor

PhD Computer Engineering
2013



Researcher



Computer Vision Developer
Published Several Research
Papers

Play Smarter, With CoachCam.



hello@coachcam.io



www.coachcam.io

